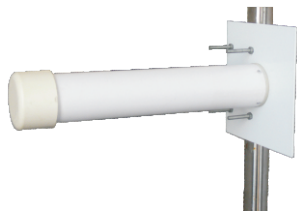


Omnidirectional Antennas

Model	Frequency (MHz.)	Gain (dBi)	VSWR	Pol.	Dimension (mm)	Weight
Q1825F03A	1.710 ~ 2.500	3	1.5	V	ø63x150	500gr.
Q1825F05A	800 ~ 960 1.710 ~ 2.500	4.5	1.5	V	ø63x220	750gr.
Q2400F08A06T	2.400 ~ 2.485 3.400 ~ 3.600	7.5	1.5	V	ø26x660	600gr.
Q2400F10A10T	2.400 ~ 2.485 3.400 ~ 3.600	9.5	1.5	V	ø26x1000	800gr.
Q2400F12A12T	2.400 ~ 2.485 3.400 ~ 3.600	11.5	1.5	V	ø26x1200	950gr.
Q2400F12A	2.400 ~ 2.500	12	1.5	V	ø39x1150	2.600gr.
D1500H13A04	1.520 ~ 1.670	13	1.5	RHCP	ø90x420	1.780gr.
Q2400F10B10	2.400 ~ 2.485	10	1.5	H	ø85x1100	2.500gr.



D1500H13A04



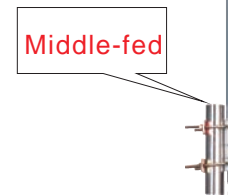
Q1825F05A



Q1825F03A



Q2400F10B10



Q2400F12A12T



Q2400F12A